

NOVALOK

ADVANCING INNOVATION

REINFORCED MESH SHELVING

PROTECTION

Designed for the safety of employees and products

Safety Mesh Deck.

Reinforced mesh shelving. Reap the rewards and benefit from extended life expectancy compared with timber.

SAFETY BENEFITS

Mesh decking can be used for storing smaller items or to improve lighting as compared to MDF decks. It is also seen as a safety measure against accidental damage to packs where small heavy items could fall down inside the racking.

- Can be easily retro fitted to existing structures.
- Loading designs of up to 1000kgs per level.
- Easily adaptable to existing systems.
- Makes it easier and safer to load pallets onto all beam levels especially high ones/
- Helps racking accommodate odd shape or size pallets and packages.

Also works hand in hand with new Victor Pro post protectors which provide extra benefits when loading or off-loading stock. Providing safety for personnel especially when using forklift equipment by means of protecting the vital supports of your warehouse racking.



FIRE SAFETY

Another application is for fire safety in a warehouse that has a sprinkler system. Mesh decks may be a requirement of the local fire authorities.

Quickly becoming a preferred alternative to traditional timber inserts. Meets NZ fire regulations by maximising effectiveness of water circulation from overhead sprinkler systems. Allows maximum light and air filtration, good product support, and hugely reduces shelf dust accumulation over conventional timber shelves.

- Allows easy regulation spacing of existing & new stock to comply with fire safety regulations.
- Facilitates sprinkler systems working efficiently in the case of an emergency.
- Easy access to stock.
- Helps to prevent the build-up of flammable debris.



NOVALOK

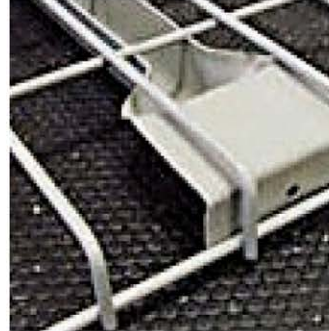
ADVANCING INNOVATION



Wire mesh decks for box beam with waterfall.



Inboard wire mesh deck for step beam.



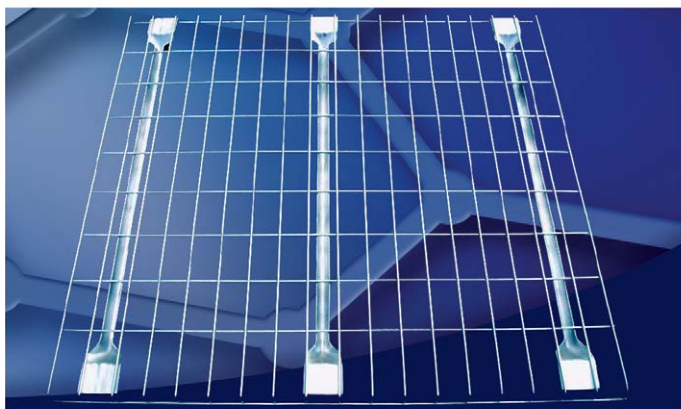
Waterfall HD Box Beam. Heavy Duty for box beam or step beam applications.



Waterfall Box Beam. Structural & step beam applications.

At Novalok we carry an assortment of wire mesh decks as an alternative to safety bars. Each mesh deck has a capacity rating that exceeds 2,000 lbs UDL (uniform distributed load) This means that it can carry 2,000 lbs as long as the load is distributed along the entire surface of the mesh deck, and not on any one particular smaller area, commonly referred to as a point load.

Typical wire decking specs are 100 x 50 x 4/5mm heavy duty industrial zinc plated wire mesh decks. Specifically designed and fabricated to accommodate a huge range of pallet racking systems and configurations.



SAFETY FEATURES

Each standard deck (typical 1330L) comes with 3 x channel supports underneath that saddle over the front and back racking beam providing full support to the wire mesh decking.

- Easy to install, simply drops in place.
- Improves fire safety by enhancing the performance of your overhead sprinkler system.
- Protects employees and products.
- Improves inventory visibility and brightens your facility.
- Self-cleaning / maintenance free.
- Gives you the flexibility to store cartons, drums and multiple pallet sizes.

ARE YOU A SAFETY CONSCIOUS WAREHOUSE OPERATOR?

Can you afford to ignore the dangers of unrestrained product stored above head height?



Upgrade from traditional timber inserts to wire mesh decks for as little as 15% extra!